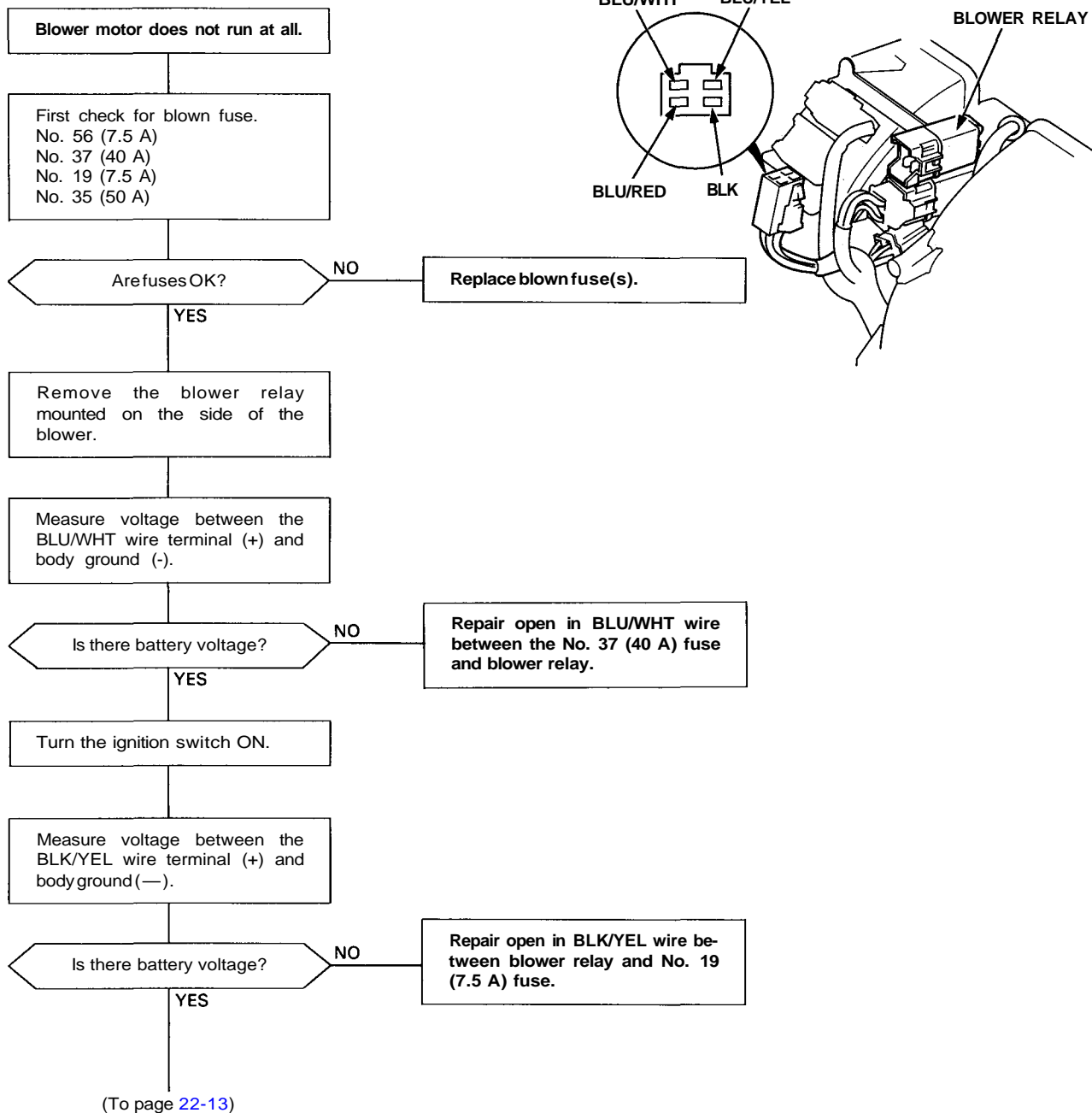


# Troubleshooting

## Blower Motor





(From page 22-12)

Turn the ignition switch OFF.

Test the blower relay: Connect battery power to relay terminal C, then connect terminal D to body ground. There should be continuity between terminals A and B with power connected, no continuity with power disconnected.

Is the relay OK?

NO

Replace the blower relay.

YES

Check for continuity between the BLK wire terminal and body ground.

Is there continuity?

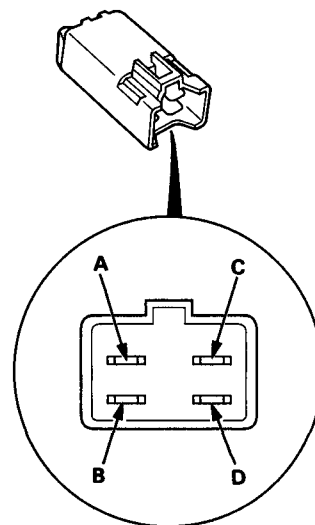
NO

Repair open in BLK wire between the blower relay and body ground. If wire is OK, check for poor ground at G303.

YES

Reconnect the blower relay.

(To page 22-14)



(cont'd)

# Troubleshooting

## Blower Motor (cont'd)

(From page 22-13)

Disconnect the 2-P connector from the blower motor.

Turn the ignition switch ON.

Measure voltage between the BLU/RED wire terminal (+) and body ground(—).

Is there battery voltage?

NO

Repair open in BLU/RED wire between blower motor and blower relay.

YES

Turn the ignition switch OFF.

Inspect the blower motor. Connect the battery positive to the BLU/RED wire terminal and negative to the BLU/BLK wire terminal.

Does the blower motor run?

NO

Replace the blower motor.

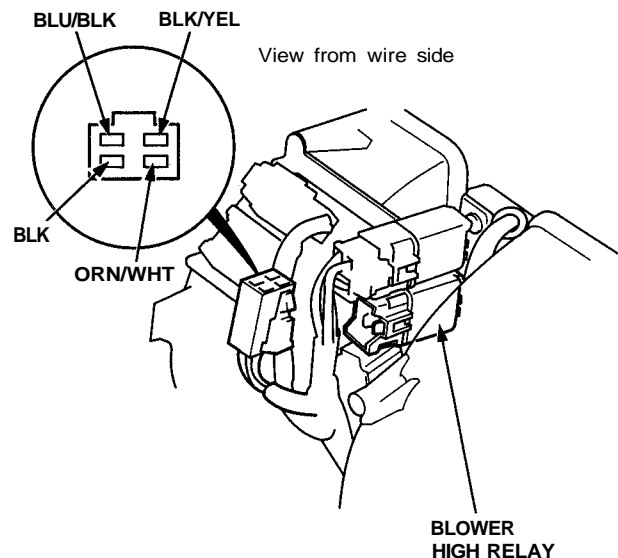
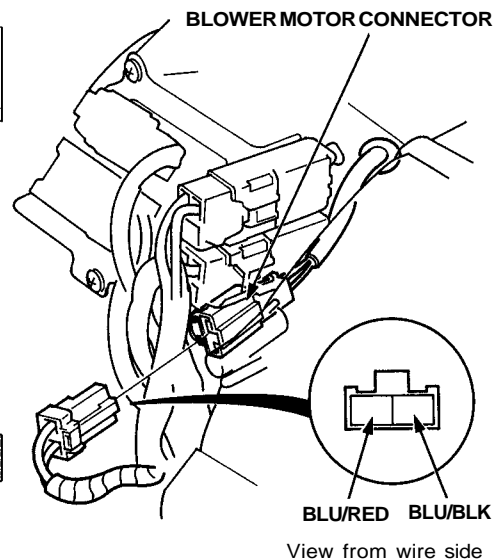
YES

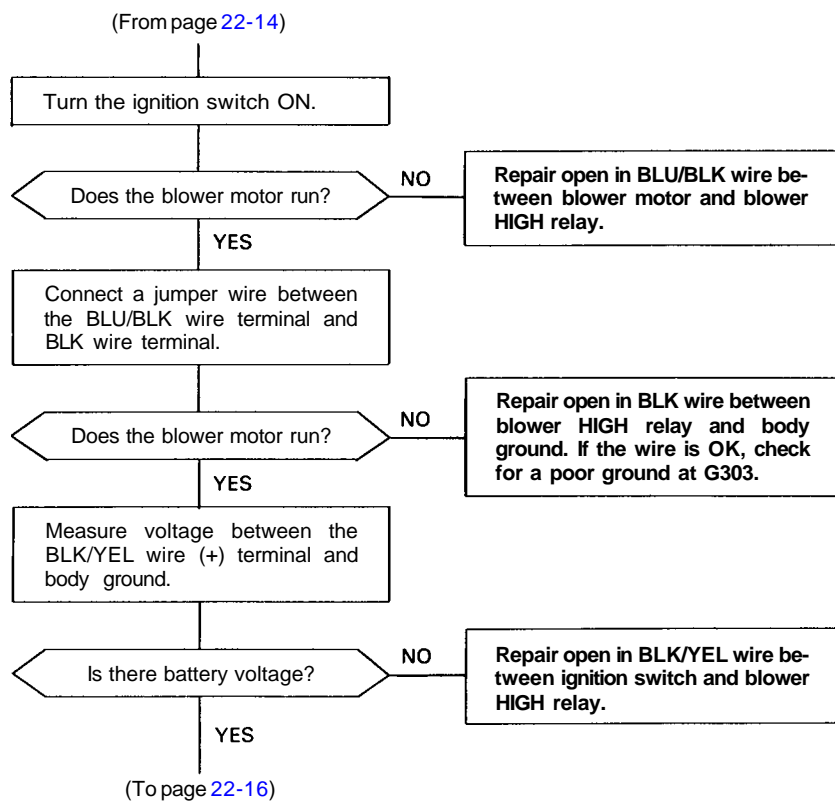
Reconnect the connector to the blower motor.

Disconnect the connector from the blower HIGH relay mounted on the side of the blower.

Connect a jumper wire between the BLU/BLK wire terminal (+) and body ground.

(To page 22-15)





(cont'd)

# Troubleshooting

## Blower Motor (cont'd)

(From page 22-15)

Turn the ignition switch OFF.

Test the blower HIGH relay: Connect battery power to relay terminal C, then connect terminal D to body ground. There should be continuity between terminals A and B with power connected, no continuity with power disconnected.

Is the relay OK?

NO

Replace the blower HIGH relay.

YES

Reconnect the blower HIGH relay.

Remove the climate control unit (page 22-6).

Disconnect the 30-P connector from the climate control unit.

(To page 22-17)

